



## FOUNDATION FOR METROWEST

June 2016 Newsletter

### In This Issue

[Feature Article](#)

[Town Fund Grants](#)

[Grants In Action](#)

[Save the Date](#)

[Upcoming Nonprofit Workshops](#)

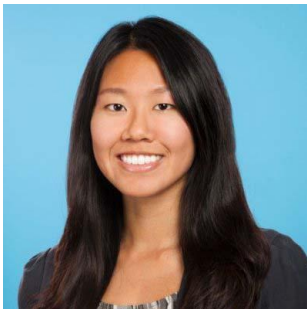
### Quick Links

[Donate](#)

[Website](#)

[Contact Us](#)

## FOUNDATION WELCOMES NEW PROGRAM OFFICER



Kimberly Blakemore recently joined the Foundation for MetroWest as our newest Program Officer.

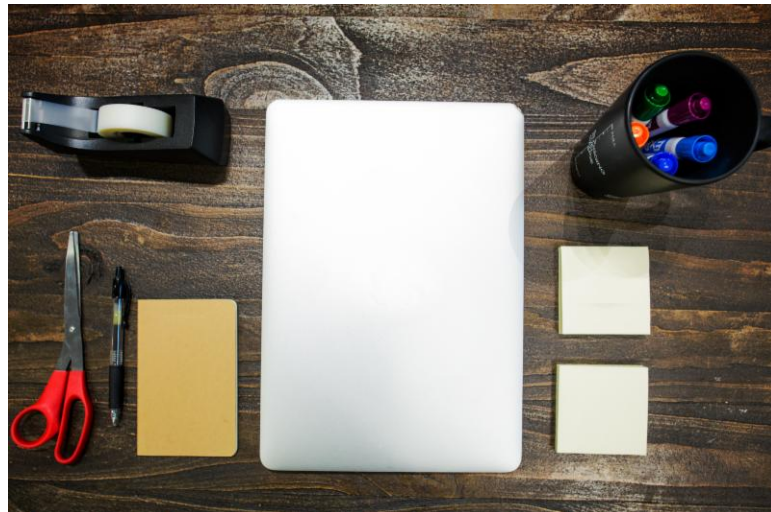
Working with Caroline Murphy and Jennifer Ubaldino, she will focus on the Foundation's [Competitive Grants](#) and [Youth in Philanthropy](#) programs.

Kimberly was previously the Director of Communications and Development for Boston-based nonprofit UP Education Network.

## FEATURE

### Minimum Wage, Maximum Value: 3 Life Lessons Only a Real Summer Job Can Teach Your Teen

Post Contributed By: Covie Edwards-Pitt, Chief Wealth Advisory Officer for Ballentine Partners, LLC



School vacation may have started, but it's not too late to help your high schooler plan for a successful summer. Friend of the Foundation and Chief Wealth Advisory Officer for Ballentine Partners, LLC, Covie Edwards-Pitt thinks that one of the best things you can do for your teenager is expect them to find a summer job. Even in a world where there is a litany of enrichment and volunteer experiences available, she argues that summer jobs teach teens three important lessons that they'll carry with them the rest of their lives.

## KEEP READING

## IMPACT

### Lexington and Wellesley Nonprofits Awarded \$50,000 in Grants

## GRANTS AVAILABLE



The Foundation for MetroWest is now accepting proposals for its 2016 [Regional Competitive Grant Program](#) in the categories of **Arts & Culture** and **Family Support**.

**Application deadline is 5:00 PM on Monday, August 1, 2016**

### [Learn More](#)

The Foundation is also accepting proposals for the 2016 [Southborough Community Fund](#) Competitive Grant Program.

**Application deadline is 5:00 PM on Friday, September 9, 2016**

### [Learn More](#)

## WHAT WE'RE READING

[Wellesley resident joins Foundation for MetroWest board of trustees](#)

[Philanthropy sets record for second consecutive year](#)

[Medfield students raise money for young girl's new prosthetic leg](#)

## STAY CONNECTED



[Join Our Mailing List](#)



The Community Boards of both the [Community Endowment of Lexington](#) and [The Fund for Wellesley](#) are pleased to announce that they have collectively granted \$50,000 through their 2016 Competitive Grant programs.

The Community Endowment of Lexington awarded grants to four organizations that include:

- [Lexington Community Farm Coalition](#)
- [Lexington Global Warming Action Coalition](#)
- [Lexington Office of Public Health](#)
- [Lex Eat Together](#)

The Fund for Wellesley awarded grants to five organizations that include:

- [OUT MetroWest](#)
- [The Wellesley Players](#)
- [Wellesley Council on Aging](#)
- [Wellesley Natural Resource Commission](#)
- [Wellesley Recreation Department](#)

To date, Town Funds at the Foundation for MetroWest have invested more than \$400,000 in projects and nonprofits that focus specifically on the needs of their towns.

[LEARN MORE](#)

## Grants In Action: OUT MetroWest

In celebration of Gay Pride month, the Foundation would like to highlight the local nonprofits working tirelessly to support MetroWest's LGBTQ (Lesbian, Gay, Bisexual, Transgender, and Queer) community.

2016 grantee of [The Fund for Wellesley, OUT](#)

[MetroWest](#) works to enrich the LGBTQ youth community in MetroWest and the larger world through programming, education, and advocacy. A local high school participant in OUT MetroWest's WAGLY program recently said, "Being able to talk to people who are experiencing what I am, and the adults who know what it's like because they lived it, is what makes WAGLY so great."

The Fund for Wellesley's grant will improve training for peer leaders and adult advisors in OUT MetroWest's Wellesley programs. "We are enormously grateful for the ways in which this grant will strengthen our services," said Executive Director Jack Lewis. To learn more about the other local nonprofits supported by the Foundation for MetroWest and its Town Funds, please visit our website.



## SAVE THE DATE

## 2016 Community Leadership Breakfast



The Foundation for MetroWest is delighted to announce that Brian P. Kelley, former President and CEO of Keurig Green Mountain, Inc. will be joining us as our keynote speaker at the 2016 Community Leadership Breakfast on October 21st!



This year will mark the Foundation for MetroWest's 5th Annual Community Leadership Breakfast, highlighting the important connection between business leaders and community philanthropy. Our region is home to thriving businesses, and we recognize that giving back to our local community is an essential part of a conscientious and successful business model. This event provides an opportunity to engage corporate decision makers and civic leaders in conversation and highlights the Foundation's leadership in creating strong, vibrant MetroWest communities.

Mark your calendar and plan to join us for this exciting opportunity!

[LEARN MORE](#)

## CENTER FOR PHILANTHROPY EDUCATION

## Upcoming Nonprofit Seminars:

**Grantwriting 101**

Tuesday, July 12, 2016  
9:30 AM - 12:00 PM  
Location: Natick, MA

[LEARN MORE & REGISTER NOW](#)

**Grant Open House**

Wednesday, July 20, 2016  
10:00 AM - 11:00 AM  
Location: Natick, MA

[LEARN MORE & REGISTER NOW](#)

**The Nonprofit Guide to PR in 2016**

Wednesday, August 3, 2016  
9:30 AM - 11:30 PM  
Location: TBD

**LEARN MORE & REGISTER NOW**

**Leading With Ease: Secrets of Sustainable Leadership**

Deadline to Apply: Friday, July 15, 2016

Begins: Fall 2016

Tuesdays, 8:30 AM - 10:30 AM

Location: Natick, MA

*Open to Executive Directors serving MetroWest nonprofits. We cannot accommodate leaders of town agencies or "Friends of" organizations at this time.*

**LEARN MORE & APPLY TODAY**



**Your Community Foundation**

- [Why Work With Us?](#)
- [Communities Served](#)
- [Our Board & Staff](#)



**Fund Information**

- [Types of Funds](#)
- [Town Funds](#)
- [Current Fundholders](#)



**Options for Giving**

- [Give Now](#)
- [Legacy Society](#)
- [Start a Fund](#)

Copyright © 2016. All Rights Reserved.