



LEX DOING GOOD

CONNECTING OUR
NONPROFIT COMMUNITY

October 22, 2022 Lexington Community Center

Welcome!



CEL makes life in Lexington better

Since 2013, CEL has awarded over \$400,000 to 44 nonprofits and town agencies serving Lexington.

Where Our Funding Goes

Community Building
27%

Arts and Culture
25%

Environment
18%

Health and Human Services
30%

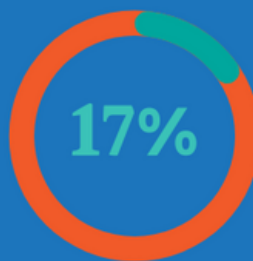


Competitive



We fund ongoing projects and new initiatives, including pilot programs.

Capacity



We underwrite infrastructure building, helping our grantees meet their missions and achieve their goals.

Discretionary

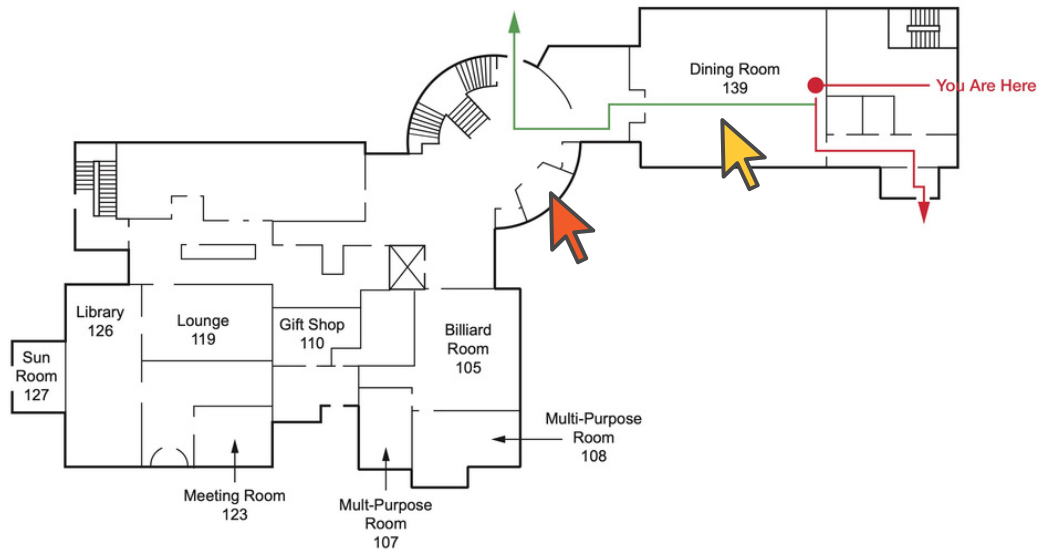


During the pandemic we funded programs to prevent food insecurity and support the arts.

Participants

Advocates, Inc.
BINA Farm Center
Cary Library Foundation
Chinese American Association of Lexington (CAAL)
Chinese Americans of Lexington (CALex)
English at Large
Food Link
Friends of Cary Library
Friends of Lexington Bikeways/Bike Lexington
In Control Family Foundation
Lex Eat Together
Lexington Arts & Crafts Society (LexArt)
Lexington Climate Action Network (LexCAN)
Lexington Community Farm Coalition (LexFarm)
Lexington Historical Society
Lexington Housing Assistance Board (LexHAB)
Lexington Monuments & Memorials Committee
Lexington Observer
Lexington Recreation & Community Programs
Lexington Refugee Assistance Program (LexRAP)
Lexington Symphony
Lexington Zero Waste Collaborative
LexPride
LexSeeHer
Munroe Center for the Arts/Munroe Center Stage
Neighbor Brigade
Notelove
Shadaj
Special Needs Arts Programs (SNAP)
Supportive Living, Inc.
The Children's Room
The Nature Connection
Vinci Robotics
Vision for Lexington
William Diamond Junior Fife & Drum Corps
Youth Counseling Connection

First Floor



LEGEND

- Primary Evacuation Route
- Secondary Evacuation Route

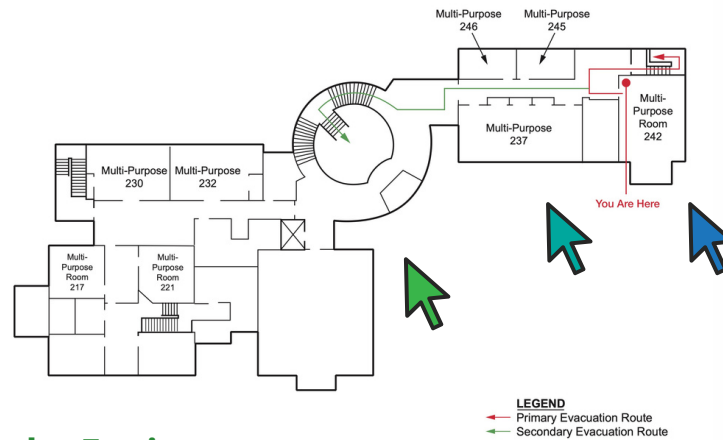
Rotunda:

Community Endowment of Lexington Welcome Table

Dining Room: Community Building

Chinese American Association of Lexington (CAAL)
Chinese Americans of Lexington (CALex)
Community Endowment of Lexington
Food Link
Foundation for Metrowest
Lexington Monuments & Memorials Committee
Lexington Observer
Lexington Recreation & Community Programs
Lexington Refugee Assistance Program (LexRAP)
Lex Eat Together
LexPride
LexSeeHer
Neighbor Brigade
The Nature Connection
Vinci Robotics
Vision for Lexington

Second Floor



Rotunda: Environment

Friends of Lexington Bikeways/Bike Lexington
Lexington Climate Action Network (LexCAN)
Lexington Community Farm Coalition (LexFarm)
Lexington Zero Waste Collaborative

Room 237: Arts & Culture

Cary Library Foundation
Friends of Cary Library
Lexington Arts & Crafts Society (LexArt)
Lexington Historical Society
Lexington Symphony
Munroe Center for the Arts / Center Stage
Notelove
Shadaj
Special Needs Arts Programs (SNAP)
William Diamond Jr. Fife & Drum Corps

Room 242: Health & Human Services

Advocates, Inc.
BINA Farm Center
English at Large
In Control Family Foundation
Lexington Housing Assistance Board (LexHAB)
Supportive Living, Inc.
The Children's Room
Youth Counseling Connection

Performances and Activities

10:30 AM Rotunda

Lexington High School a Capella Ensemble

11:00 AM Lawn (tent if inclement weather)

William Diamond Junior Fife & Drum Corps

11:30 AM Rotunda

Lexington High School a cappella ensemble



*CEL Welcome Table
1st Floor Rotunda*

**Kids'
Scavenger Hunt**



Advocates champions people who face developmental, mental health, or other life challenges. Advocates partners with individuals and families to shape creative solutions to even the greatest obstacles – by listening, then doing what it takes to help people thrive. Advocates' Brain Injury Day Services provides therapeutic programming to help brain injury survivors learn and enhance their quality of life.

To learn more, go to: www.advocates.org

BINA FARM CENTER

BRINGING PEOPLE TOGETHER



We are a nonprofit therapeutic horseback riding center. We provide an individualized, comprehensive therapeutic and recreational environment using equine-assisted activities and therapies, vocational training, and creative/complementary therapies that meet the unique learning and engagement needs of children and adults with physical, developmental, and emotional challenges.

To learn more, go to www.binafarm.org
or contact info@binaform.org



*Funding Pages, Programs
&
Possibilities*

Our mission is to raise private funds that enable Cary Library to provide creative programming, additions to its collection, and innovative technology for the benefit of all users, keeping our community engaged, inspired and connected.

To learn more go to: www.caryllibraryfoundation.org
or contact: info@caryllibraryfoundation.org



Chinese American Association of Lexington

莱克星顿华人协会

We engage Lexington's growing Chinese American community in civic life, share our culture and heritage, support the schools, promote community service, and advocate for social justice and equality. Our signature events include an annual Lunar New Year celebration and a town wide Candidate Forum.

To learn more, go to: www.caal-ma.org
or contact: contact@caal-ma.org



Chinese Americans of Lexington (CAlex) is a 501(c)(3) organization, with the mission to celebrate our cultural heritage, promote civic engagement, and provide a platform to voice our concerns and give back to the community. Key activities include cultural celebrations, collaboration with town and state on various activities, and providing volunteer opportunities.

To learn more, to go: <https://calexma.org/>
or contact: contact@calexma.org



ENGLISH AT LARGE

English At Large helps adult immigrants gain greater understanding of the English language and U.S. culture through free, personalized instructional programs. Students are taught by trained local volunteers who serve as tutors, teachers, and small group facilitators in EAL's One-to-One Tutoring, Conversation Groups, Career Access Lab, and Beginner English programs.

To learn more, go to: www.englishatlarge.org



Food Link rescues surplus fresh food that would otherwise be wasted and distributes it to food-insecure people throughout Eastern MA. Food Link partners with the Lexington Interfaith Pantry and Minuteman High School's Culinary Arts Program to distribute healthy food to people living with food insecurity, and hosts a weekly group from the LABBB Collaborative that sorts and repackages food at Food Link's hub.

To learn more, go to: www.foodlinkma.org



Friends of Cary Library supports and advocates for the Library's vital role in Lexington's diverse community. Through an annual membership drive and book sales, volunteers raise funds that support the Summer Learning Program for All Ages, the Museum Pass Program, Read it Now, See It Now Collections, a Door-to-Door Library Service, and accessible programming.

To learn more, go to: www.caryllibrary.org
or contact: Friends@caryllibrary.org



Friends of Lexington Bikeways/Bike Lexington is a non-profit group dedicated to "Safe Cycling for All" and the shared use of bicycle routes in and around Lexington. We work closely with the Bicycle Advisory Committee to advocate for safer streets for bicyclists of all ages and abilities. We participate in a range of activities, including events for children, workshops for women, bike maintenance, bike rides, and forums on various topics.

To learn more, go to: www.bike-lexington.org
or contact: bikelexingtonma@gmail.com



www.DriveInControl.org

The *In Control Family Foundation's* mission is to drastically reduce automobile crashes and subsequent injuries/deaths through hands-on, closed course instruction and community engagement. Our passion is to work with young drivers who have the highest crash rates, but we train drivers of all ages.

To learn more, go to: www.DriveInControl.org
or contact: Dan@iDriveInControl.org



Lex Eat Together addresses the hunger and isolation that many in our community face. Our mission is to alleviate food insecurity and loneliness. To accomplish this, we provide a free, nutritious weekly meal to our guests in a dignified setting, and help build a sense of community and connection.

To learn more, go to: www.lexeattogether.org
or contact: lexeattogether@gmail.com



Lexington Arts and Crafts Society (LexART) provides a welcoming and inclusive space in Lexington Center to practice, teach, and share traditional and new media, techniques, tools and materials. Expert and inexperienced artists practice in nine guilds that focus on such areas as ceramics, metalworking, fiber arts, and photography. LexART offers classes, exhibits, community-wide collaborations, shows, and sales.

To learn more go to: www.lexart.org
or contact: Exec.dir@lexart.org



LexCAN advances equitable and sustainable community responses to the global climate catastrophe. Our educational programs, information/action platforms, events, campaigns, and collaborative initiatives build a community of committed climate citizens with the knowledge, skills, and resources to act to limit, adapt to, and recover from the damage resulting from human-caused climate change.

To learn more, go to: www.lexcan.org
or contact: info@lexcan.org



LexFarm is a nonprofit certified organic farm that connects the community to locally grown food and sustainable farming practices while preserving historic farmland. LexFarm grows produce for its CSA, farmstand, and hunger relief programs. The farm fosters connections to local food and farmland through its youth educational programs, on-farm events, and field volunteering.

To learn more, go to: www.lexfarm.org
or contact: info@lexfarm.org



The *Lexington Historical Society* preserves and interprets Lexington's rich history from the Revolutionary War era to the present. The Society oversees four historic buildings: Buckman Tavern, the Hancock-Clarke House, Munroe Tavern, and the Depot. It offers programs, events, tours, and exhibitions that highlight these houses and the Society's collections.

To learn more, go to:

<https://www.lexingtonhistory.org>

or contact: director@lexingtonhistory.org



The Lexington Housing Assistance Board (LexHAB) preserves and develops affordable housing for low and moderate income individuals and families, a need that has reached crisis proportions in the face of diminishing affordable housing stock. LexHAB currently has 78 units ranging from single-family homes to apartments and duplexes, and seven new units under development.

To learn more go to: www.lexingtonma.gov/lexington-housing-assistance-board-lexhab

or contact: director@lexhab.org



Lexington Monuments and Memorials Committee

Our committee develops and publishes an inventory of town memorials, reviews requests for new public memorials, and recommends an annual maintenance plan. We build interest in Lexington's history by asking residents to search for monuments. Our current focus is a town wide crowdsourcing project to document lost and forgotten monuments, working with Lexington High School volunteers.

To learn more, go to:

www.lexingtonma.gov/792/Monuments-Memorials-Committee

or contact: monumentscmte@lexingtonma.gov



Lexington Recreation and Community Programs provides opportunities for residents of all ages to engage in high quality, inclusive, accessible programs and services. It offers numerous sports and recreation spaces; adult classes and programs; youth camps, clinics and leagues; aquatics; therapeutic recreation; lifelong learning; human services; and more.

To learn more, go to:

www.lexingtonma.gov/recreation

or contact: recdept@lexingtonma.gov



The *Lexington Refugee Assistant Program* (LexRAP) is a support network for refugees and asylum seekers, including newly arrived Afghan refugees. Volunteers coordinate and provide assistance to families with housing, food, clothing, English language learning, transportation, health care, education, employment, legal aid, and integration into the Lexington community.

To learn more, go to: www.lexrap.org
or contact: tom.f.rich@gmail.com



Lexington Symphony's accomplished musicians bring our community together to experience the joy of live classical music. Each season, the Symphony performs six programs at Cary Hall, community concerts, and its signature educational program, Orchestrating Kids Through Classics, which gives all third graders a chance to take a musical journey through time from chanting monks to Star Wars.

To learn more, go to: www.lexingtonsymphony.org
or contact: info@lexingtonsymphony.org



We raise awareness and take action to reduce waste and promote sustainable practices through advocacy, access, and education. We offer a free composting drop-off program and reusable restaurant takeout container program, advocate for local and regional policies to reduce waste, host low-waste shopping events, and offer tips on simple actions that can reduce waste.

To learn more, go to: www.lexzerowaste.org
or contact: info@lexzerowaste.org



A community of LGBTQIA+ people, families & allies
Lexington, Massachusetts

LexPride provides social, support, and educational opportunities, information, and resources for LGBTQIA+ people, their families and allies; advocates for social justice in our schools, town, and state; and runs such events as Transgender Day of Remembrance, MLK Day of Service, Candidate Forum on Social Justice, and PRIDE celebrations.

To learn more, go to: www.lexpride.org
or contact: LexPrideMA@gmail.com



LexSeeHer is an all-volunteer nonprofit that works to make women visible in Lexington, MA. Our largest project is establishing a monument to Lexington women's contributions across history (to be erected in 2024). We also make women visible through historical activities, speaker events, artistic collaborations, community events, research, and more.

To learn more, go to: www.LexSeeHer.com
or contact: LexMonument@gmail.com



The *Munroe Center* nurtures students, artists, audiences, and the community in creative explorations by offering opportunities to engage in high quality activities in the arts. It offers year-round classes for all ages in visual, ceramic, and performing arts; a summer arts camp; school break arts programs; community art-making events; performances; and gallery and public art exhibits.

To learn more, go to: www.MunroeCenter.org
or contact: cristina@MunroeCenter.org



Neighbor Brigade's network of community volunteers helps manage day-to-day tasks for fellow Lexington residents who are experiencing sudden crises. Volunteers help with meal preparation, pet care, rides to appointments, household errands, prescription pickups, and more.

To learn more, go to: www.neighborbrigade.org
or contact: marcy@neighborbrigade.org



Notelove is a Lexington-based, student-run organization that offers free, accessible instrumental music lessons to young people 5-18 years old across the Boston area, with a focus on underserved students. The instructors are 14- to 18-year-old musicians who tutor students both in-person and online through Zoom.

To learn more, go to:
www.noteloveboston.weebly.com



Shadaj is a Lexington-based, volunteer-run organization that nurtures and promotes authentic Indian classical music through intimate, Baithak style concerts, music appreciation sessions, and lecture-demonstrations that cultivate and bring together a diverse community of engaged listeners. Shadaj events feature some of the world's most celebrated Indian classical virtuosos.

To learn more, go to: www.shadaj.org
or contact: shadajmusic@yahoo.com



SNAP delivers music and visual arts programs for people with intellectual and developmental disabilities. The programs cultivate and celebrate each person's unique creative abilities while building peer relationships and fostering self-esteem. SNAP also holds public concerts and art exhibits to raise awareness of the talents and abilities of people with disabilities.

To learn more, go to: www.snaparts.org
or contact: info@snaparts.org



Supportive Living, INC.

— BRAIN INJURY PROGRAMS —

We help people living with traumatic brain injury, stroke, Parkinson's disorder, and other neurological disorders live independently by providing affordable, appropriate housing; offering community-based Neuro-Wellness exercise programs that target physical, social-emotional, and cognitive functioning; and research and educational opportunities with local colleges and universities.

To learn more, go to:

<https://www.supportivelivinginc.org>

or contact: info@supportivelivinginc.org



The Children's Room

The Children's Room offers free, virtual grief support services for 3½-to-18-year-old children and teens who have experienced the death of a parent or sibling. The organization's programs include volunteer-led peer support groups, a teen program, a parenting-while-grieving series, and Family Nights, as well as individualized consultation to parents and other supporting adults.

To learn more, go to: www.childrensroom.org

or contact: info@childrensroom.org



The Nature Connection's mission is to improve individual and community well-being through the therapeutic use of nature. We bring the outside -- seasonal plants, live animals, and natural materials -- inside to people who have limited or no access to the outside world. We offer hands-on activities to at-risk youth, people with disabilities, and elders at hospitals and residential facilities.

To learn more, go to: www.nature-connection.org
or contact: info@nature-connection.org



Parent founded and parent run, *Vinci Robotics* offers special needs students a robotics and STEAM education space where they can develop problem solving skills, team collaboration, and a spirit of innovation through hands-on, project-based learning. Afterschool programs offer design and building opportunities, teamwork, challenges, and competitions.

To learn more, go to: www.vincirobotics.org
or contact: Contact@vincirobotics.org



The *Vision for Lexington Committee* engages the community -- through surveys, focus groups, and other outreach -- to identify a shared, comprehensive vision for Lexington's future. The Committee communicates that vision and makes recommendations to municipal decision-makers including the Select Board, School Committee, Planning Board, and Town Meeting.

To learn more, go to:

<https://lexingtonma.gov/902/Vision-for-Lexington-Committee>

Or contact: visionforlex@lexingtonma.gov



The William Diamond Junior Fife & Drum Corps (WDJ) offers 8-to-18-year-olds (most of whom come with no previous musical experience) the opportunity to learn to play an instrument modeled after those used in the Revolutionary War: a fife, snare drum, or bass drum. Participants share music and history with spectators across Massachusetts and the world through parades, musters, and invitation-only events.

To learn more, go to: www.williamdiamondjrs.org



Youth Counseling CONNECTION

YCC is an independent nonprofit organization that strives to improve the emotional wellness of youth in the Lexington community by providing free and accessible confidential mental health support to kids, teens, and families. YCC services include short-term counseling, support groups, and community-based programs. Youth and families of all cultures, religions, genders, and sexual identities are welcome.

To learn more, go to:

www.youthcounselingconnection.org

Sign up for emails at www.eepurl.com/hVFrg9

or contact: admin@youthcounselingconnection.org





**COMMUNITY
ENDOWMENT
OF LEXINGTON**

The Community Endowment of Lexington enhances the quality of life of Lexington citizens. CEL awards grants to nonprofits and town agencies working in the areas of health and human services, arts and culture, the environment, and community building; provides ways for donors to give back and leave a legacy; and encourages innovative and collaborative solutions to issues facing our community.

CEL Board 2022-23

Lisa Boehm
Ann Boese
Elizabeth Brach
Thomas Brennan
Yifang Gong
Kimberly Hensle Lowrance
Elizabeth Kochi
Jennifer Lawrence
Roberta Messina
Judy Pappo
Mary Ann Sorel
Jillian Tung

To learn more go to:
www.lexingtonendowment.org
or contact: chair@lexingtonendowment.org



FOUNDATION FOR METROWEST

The Foundation for MetroWest improves the quality of life in 30+ MetroWest communities by providing financial and educational resources to local nonprofit organizations, sharing essential data about our region to inform decision making, and partnering with donors to help guide and align their giving with the areas of greatest need in the community.

To learn more, go to: www.FoundationMW.org

About Town Funds

CEL falls under MetroWest's Town Funds program. These permanently endowed funds work to bolster the quality of life for all residents in their town. The funds support innovative programs and services that help make life safer, healthier, and more enjoyable for all members of the community in the areas of health and human services, recreation, community building, environmental protection, and the arts.

Each Town Fund is led by a volunteer community board with a deep understanding of local needs and the local nonprofits that address them. These committee members oversee fundraising, review applications based on published criteria, and recommend grants to the Foundation's Board of Trustees.

*Thank
You*

to our hosts

Lexington Community Center

Christine Dean, Director
and Staff

for the video presentation

LexMedia

Lexington's Nonprofit Community Media Center

Florence DelSanto, Executive Director
and Staff

and to

Nancy White

CEL Founder, past Co-Chair,
long-time volunteer

and

the inspiration behind *LexDoingGood*



*Thank
You*

LexDoingGood Committee

Sumeit Aggarwal

Ann Boese

Kimberly Hensle Lowrance

Erta Hysenbegasi

Elizabeth Kochi

Janice Litwin

Innessa Manning

Roberta Messina

Judy Pappo

Mary Ann Sorel

Nancy White





Sparking joy, enriching lives,
and building community
through the practice, teaching,
and sharing of art and craft.

Since its founding in 1935, LexArt has striven to enrich the lives of people in our community and bring us together in a welcoming, supportive, and creative environment.

- **We are committed to** maintaining and furthering traditional craft, while engaging new voices, new perspectives and exploring new technologies.
- **We are committed to** making the arts accessible to all.
- **We believe that** the desire to create is fundamental to our humanity, teaches us about ourselves and each other, and fosters understanding and communication.
- **We believe that** the arts can strengthen and unify our community.
- **We believe that** the arts are essential to an open, just, and sustainable society.



*Bird House by Bhim Subba
Refugee Artists of Worcester*

Oct. 8-30
**Reaching
Across the
World
Through
Heritage
Crafts**

130 Waltham Street, Lexington, 781-862-9696 **LexArt.org**

Exhibits • Classes • Studios • Markets




Proud sponsor of
LexDoingGood

CAMBRIDGE
— TRUST —

PRIVATE BANKING | WEALTH MANAGEMENT

[CambridgeTrust.com](https://www.cambridgetrust.com)

Member FDIC



We make
senior living simple.

We help families navigate all their options to live their best life. Getting the care they need while supporting their independence.

We are here to help, because the right place means everything.

- A FREE in-depth consultation to identify needs
- Discuss financial options, location, and other care needs
- Provide a personalized list of local housing options
- Set up and tour communities with you
- Once the right place is selected, we make transitions easy!

Explore and tour senior living communities including Independent and Assisted Living, as well as Memory Care Communities. Contact us today!



Patricia Jacotin, MPH, MBA
Certified Senior Advisor®

781-205-9455



OasisSeniorAdvisors.com/NW-Boston



COMMUNITY ENDOWMENT OF LEXINGTON

Health
&
Human Services

Environment

Community
Building

Arts & Culture

To learn more, go to www.lexingtonendowment.org

or follow us

Facebook: @LexingtonEndowment

Twitter: @LexEndowment

Instagram: @lexdoinggood